

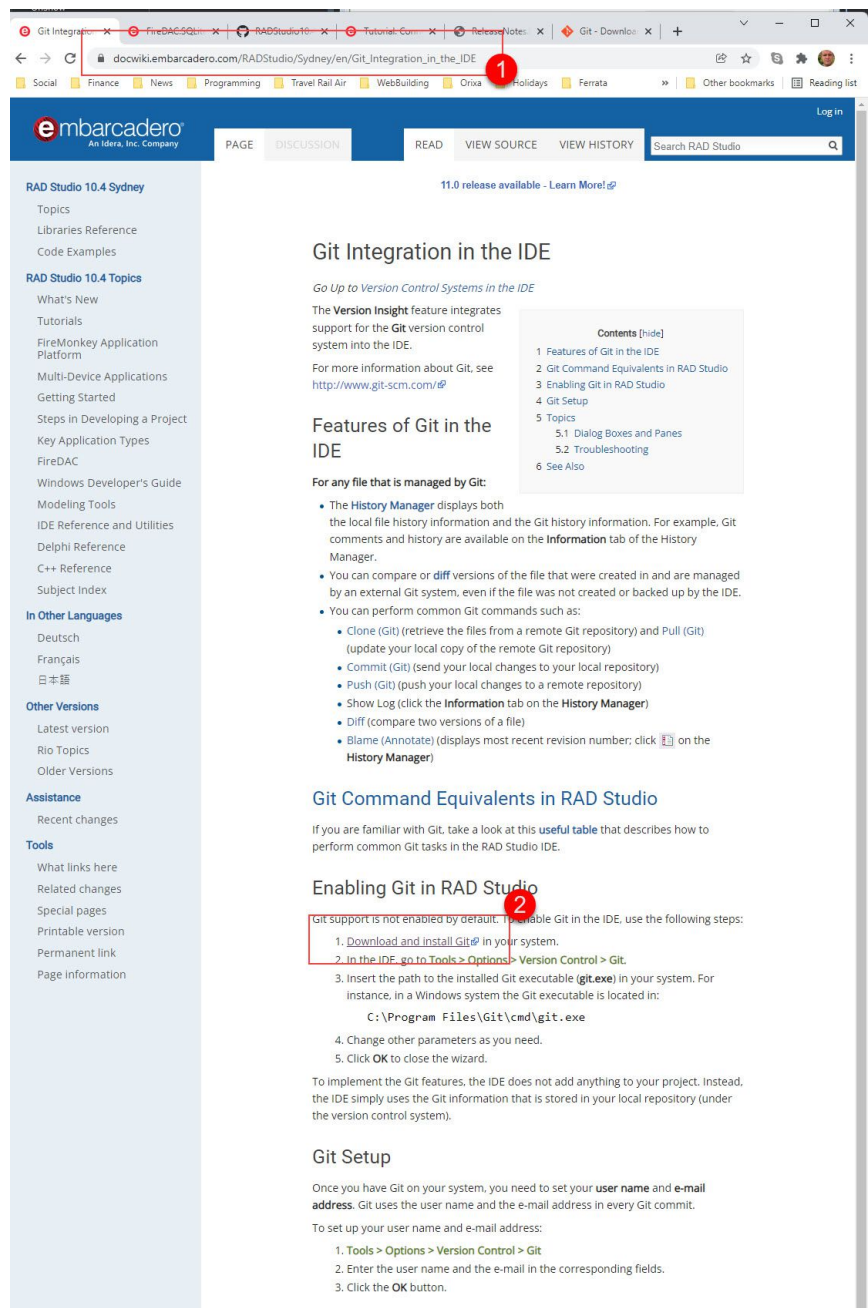
Setting up GIT and opening EMB sample projects

Two processes in this help-item. Not directly related, but you need GIT installed to download the Delphi demo-projects added by EMB's team-members. I had to do the two processes as one, so I detail it in that way here.

Download and Install Git, Location of Embacadero Git Wiki

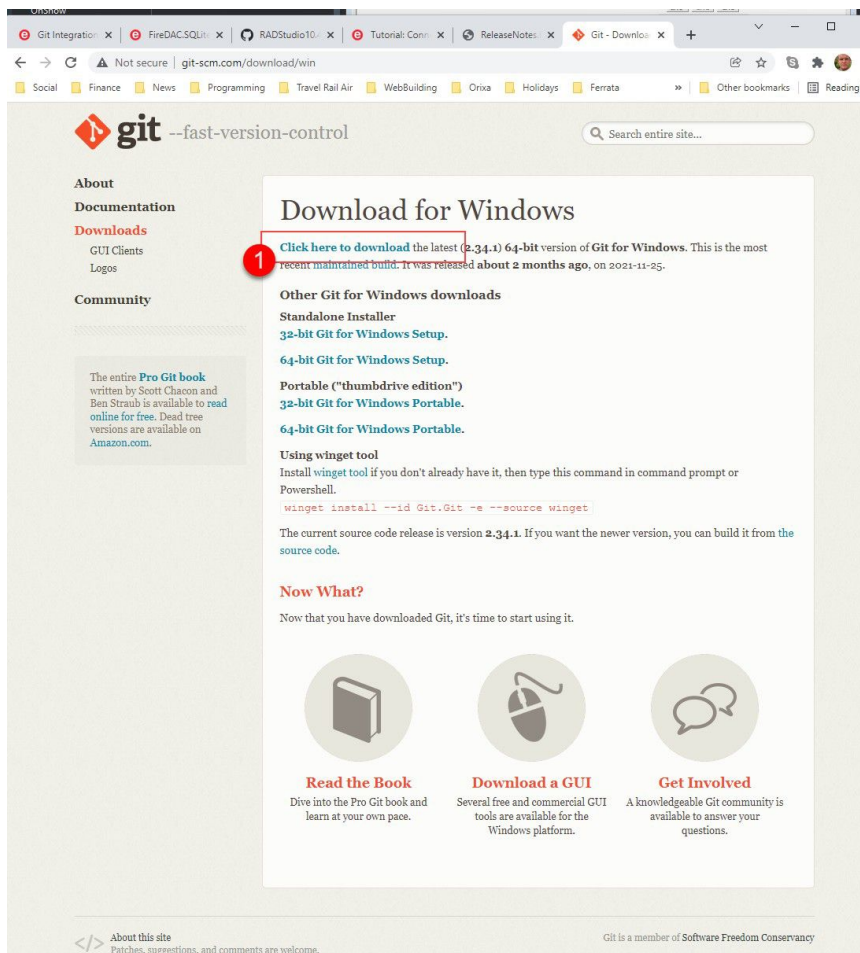
EMB have a decent starter Wiki page for GIT here: [Go to: https://docwiki.embarcadero.com/RADStudio/Sydney/en/Git_Integration_in_the_IDE](https://docwiki.embarcadero.com/RADStudio/Sydney/en/Git_Integration_in_the_IDE)

The image below, just shows this page. The assumption in this help-item is that you are simply using Git to download source code for **review**, not to write back any changes you make.



Delphi Git Wikipage

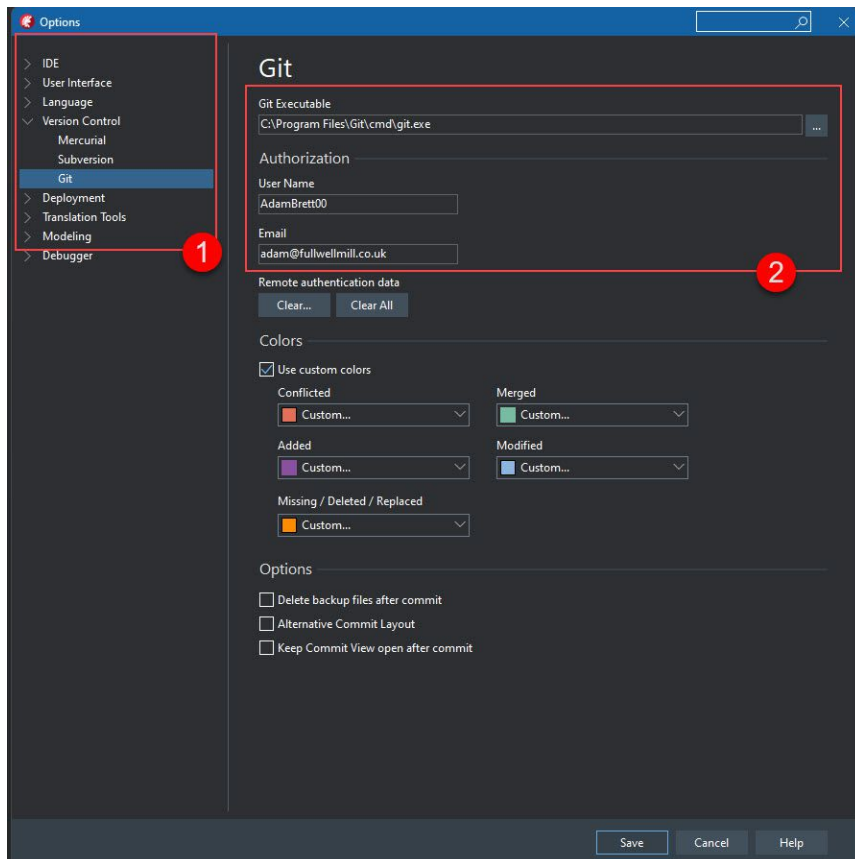
1. Web-link for the page.
2. Link to Download and install Git. Clicking here is "step one" in getting Git working on your computer.



Git main download page

1. Main link with downloads a fully automated installer. Run this to install. Note that there are about a dozen settings which GIT asks you to choose. I left all these as the default. Make a note of the directory /folder into which you installed the product, as you will need it in Delphi.

Set up Delphi to use Git



Delphi Git Setting Options

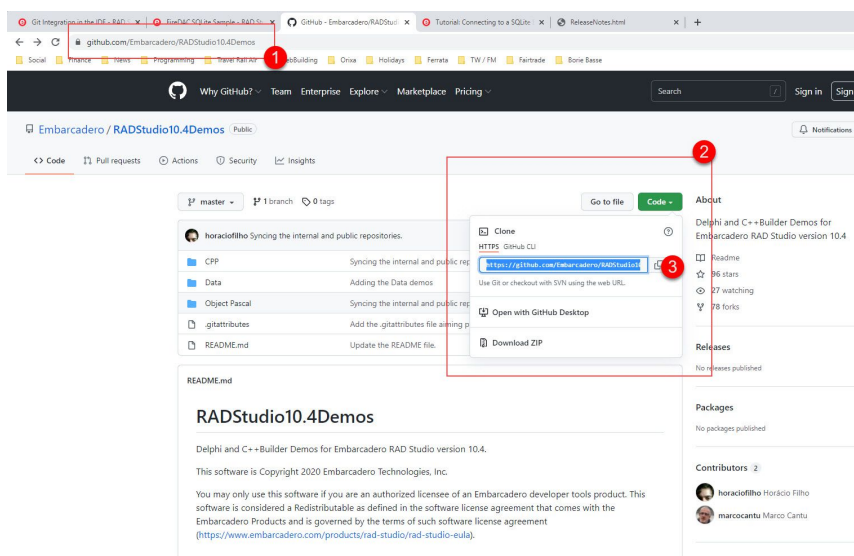
1. Navigate from the main menu to Tools, Options, Version Control, Git.
2. Pick the location of your git executable file. Default is C:\Program Files\Git\CMD\git.exe. Also set your User Name and Email Address. Note that I do not have any kind of Git account, but I just fudged some entries here. I have no intention of updating files with Git yet, and this seems to work for "just" reading other people's files out of a Git repository.

Finding the address for the Git Repository (the GitHub CLI) on the GitHub site

Embarcadero have a "main" Github account, with multiple child repositories. You need the remote address (URL) for each repository to download it's contents so you can read the files. GitHub jargon calls this URL a CLI.

Emb's GitHub main page is here: <https://github.com/Embarcadero>

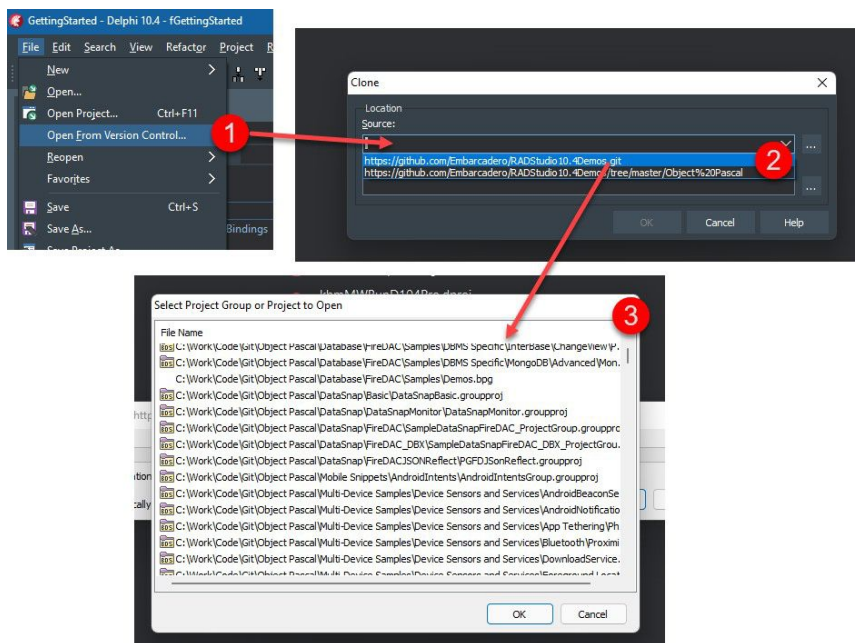
But this is **not** the address / URL you use in Git. This can be found, hidden away on each Repository's web-page under a "Code" button, which at time of writing is shown in the image below:



Delphi Git Finding Repository Address

1. Navigate to the desired page listing repositories.
2. On pages with active repositories a "Code" button will show.
3. Click on this button and a drop-down window will appear, in this the GitHub CLI is listed, copy this for use in the next step.

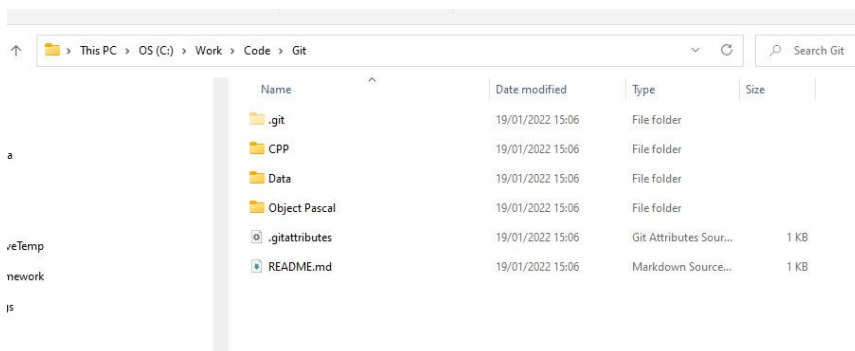
Opening the GitHub Repository in Delphi



Delphi Git Accessing a Repository

1. From Main Menu, select File, Open From Version Control, then pick "Git" at the Version Control Option (this screen is not shown above)
2. "Clone" window opens, the first time you are downloading the files, paste the GitHub CLI (URL) into the "Source" field, and select a local folder for the destination. Click "OK", the Delphi IDE will then fetch all the files in the Repository, and copy them to your local machine. This may take some time.
3. You are then given the option of opening a Project Group or Project. If the Repository has a large number of these, with long file names this is not terribly easy. The dialogue is not resizeable. Select the one you want and click OK. Delphi should open it in the IDE.

Note: Once you have downloaded the Repository and registered it in this way, Delphi seems to allow you to open all the projects normally.



Delphi Git resulting Folders

Downloading the Embarcadero "RADStudio" Git Repository resulted in the above folders being added to my "Code / Git" folder. Note the ".git" hidden folder at the top of this window, contains a whole set of Git control files which are used to monitor changes you may make to files in a Repository. The contents of the .git folder are shown below.

e:\Git\git

↑ This PC > OS (C:) > Work > Code > Git > .git >

	Name	Date modified	Type	Size
amPersonal	hooks	19/01/2022 15:06	File folder	
inner	info	19/01/2022 15:06	File folder	
G	logs	19/01/2022 15:06	File folder	
tions and Resources	objects	19/01/2022 15:06	File folder	
1-7.77.0-win64-mingw	refs	19/01/2022 15:06	File folder	
UBuilder	config	19/01/2022 15:06	File	1 KB
Us	description	19/01/2022 15:06	File	1 KB
lphiSamples	HEAD	19/01/2022 15:06	File	1 KB
wnloadedInstallers	index	19/01/2022 15:06	File	716 KB
BExternalModules	packed-refs	19/01/2022 15:06	File	1 KB
ailSender				

Git Background files on-disk